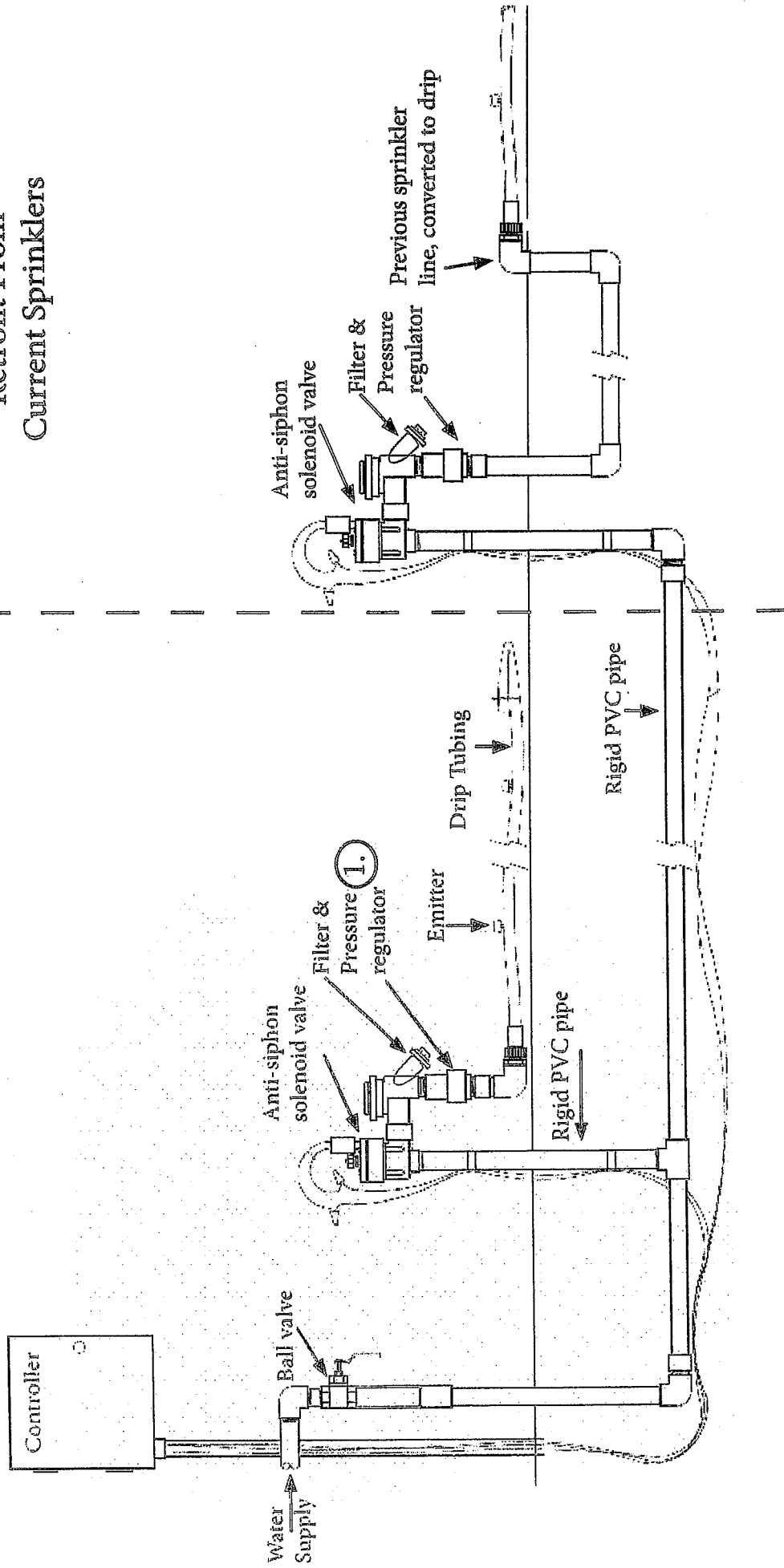


Option 2: Retrofit From Current Sprinklers

Drip System



Sprinkler to Drip Irrigation Conversion Option 3 Using a Drip Retrofit Kit

1. Most valves that water lawn will not have a pressure regulator or filter. Drip systems require both of these. Install these pieces. (See above, 1) Some retrofit kits include these in the body of the replacement sprinkler part. (Pic. 3)
2. Choose a sprinkler conveniently located to install the drip retrofit kit. Often the drip grid is best to run off a corner sprinkler. (Pic. 1)
3. Unscrew the top of the sprinkler you have selected. Remove the insides of the sprinkler. (Pic. 2)
4. Replace with the retrofit kit, Marlex street elbow, and the compression tee and adapter. (Pic. 3)
5. Find the other sprinklers and cap them. You can unscrew the body of the sprinkler and cap the sprinkler at the pipe below.
6. Take the drip tubing and push it into the compression tee on both sides. It is suggested a max of 200 feet per valve. (Pic. 4)
7. Make a grid with the drip tubing, You may need elbow compression fittings to make the 90 degree turn in the tubing. (Pic. 5)
8. Flush the system by turning it on and letting it flow until the water runs clear. Turn off the water and place the "Figure 8" closures on each open end. (Pic. 6)
9. Stake the drip line down every 3' with the steel "U" hooks. (Pic. 7)
10. Add mulch to cover the drip line.



Thank you to the City of Santa Monica for the pictures.